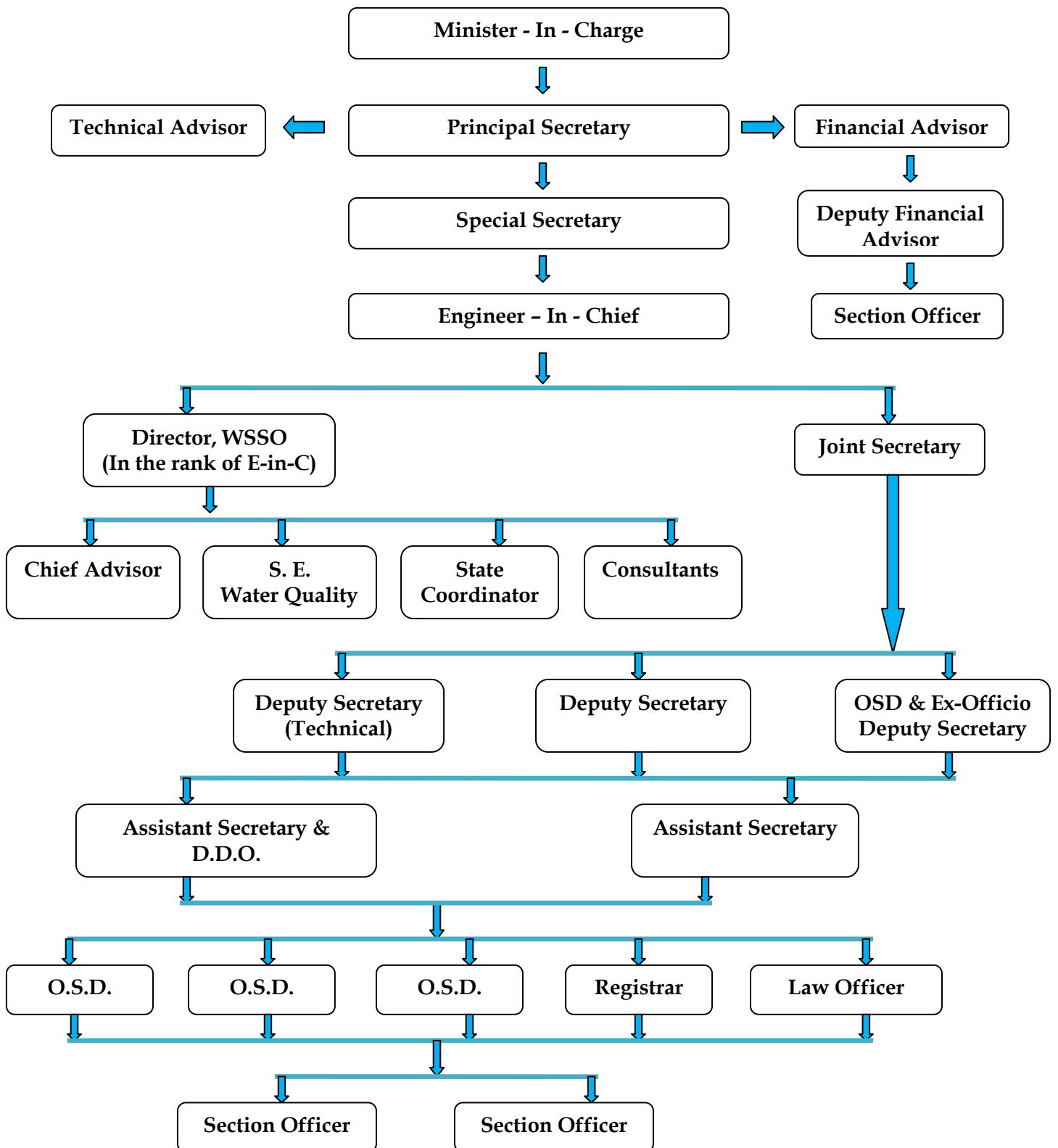


**ORGANISATIONAL STRUCTURE OF THE
PUBLIC HEALTH ENGINEERING DEPARTMENT,
GOVT. OF WEST BENGAL**



PERMANENT SET UP OF PHE DTE.

CHIEF ENGINEER (HEADQUARTERS)

Assistant Chief Engineer –II

Deputy Superintending Engineer (HQ)

O.S.D.(Monitoring Cell)

Dy. Suptd. Engineer-I

Dy. Suptd. Engineer-II

SE, South 24 Pgs. W/S Circle
DSE, South 24 Pgs. W/S Circle

SE, Eastern Circle
DSE, Eastern Circle

SE, Murshidabad Circle
DSE, Murshidabad Circle

SE, North Bengal Circle-II
DSE, North Bengal Circle-II

SE, North 24 Pgs W/S Circle
DSE, North 24 Pgs W/S Circle

1. EE, South 24 Pgs W/S Dv-I i. AE, HQ-I ii. AE, HQ-II iii. AE, Sub Dv-I iv. AE, Sub Dv-II v. AE, Baruiপুর Sub Dv	1 EE, Barasat Divn i. AE, HQ ii. AE, Sadar Sub Dv iii. AE, Habra Sub Dv iv. AE, Bongaon Sub Dv v. AE, Barrackpore Sub Dv vi. AE, Basirhat Sub Dv vii. AE, Hasnabad sub Dv viii. AE, RWS Sub Dv	1 EE, Murshdabad Divn i) AE, HQ ii) AE, Berhampur Sub Dv i) AE, Islampur Sub Dv ii) AE, Kandi Sub Dv iii) AE, Jangipur Sub Dv iv) AE, Lalbag Sub Dv v) AE, RWS Sub Dv	1 EE, Malda Divn i. AE, Malda Sadar Sub Dv ii. AE, Chanchal Sub Dv iii. AE, RWS Sub Dv.	1 EE, N 24 Pgs W/S Divn-I i. AE-I ii. AE-II iii. AE, N 24 Pgs Sub Dv-I
2. EE, Alipore Divn i. AE, HQ-I ii. AE, HQ-II iii. AE, D.Harbour Sub Dv iv. AE, Raidighi Sub Dv v. AE, Canning Sub Dv vi. AE, Kakdwip Sub Dv vii. AE, RWS Sub Dv	2 EE, Nadia Divn i. AE, Kalyani Sub Dv-I ii. AE, Kalyani Sub-Dv-II iii. AE, Ranaghat Sub Dv. iv. AE, Krishnanagar Sub Dv v. AE, Debagram Sub Dv vi. AE, RWS Sub Dv.	2 EE, Berhampore Divn-I HQ at Berhampore (newly created) i. AE-I ii. AE-II iii. AE, Raghunathganj Sub Dv	2 EE, Malda Ars. Area W/S Divn i) AE-I ii) AE-II	1 EE, N 24 Pgs W/S Divn-II i. AE-I ii. AE-II iii. AE, N 24 Pgs Sub Dv-I
	3. EE, Nadia Ars Divn-I i. AE-I ii. AE-II	3. EE, Berhampur Divn-II (Temporary) i. AE-I ii. AE-II	3 EE, Balurghat Divn i) AE, HQ ii) AE, Sadar Sub Dv iii) AE, RWS Sub Dv	3 EE, Barasat Ars Divn i. AE-I ii. AE-II iii. AE, Barasat Ars Sub Dv
	4 EE, Nadia Ars Divn-II (HQ at Krishnanagar) i. AE-I ii. AE-II iii. AE, Tehatta Sub Dv		4 EE, Raiganj Divn i. AE, HQ ii. AE, Raiganj Sub Dv iii. AE, Islampur Sub Dv iv. AE, RWS Raiganj Sub Dv	

SE-Superintending Engineer , EE – Executive Engineer, AE – Assistant Engineer, DSE-Deputy Superintending Engineer

PERMANENT SET UP OF PHE DTE.

CHIEF ENGINEER (WESTERN ZONE)

Assistant Chief Engineer-II ←

SE, Western Circle
DSE, Western Circle

SE, Central Circle
DSE, Central Circle

SE, RCFA W/S Circle
DSE, RCFA W/S Circle

1. EE, Midnapur Divn

- i) AE, HQ
- ii) AE, Kharagpur Sub Dv
- iii) AE, Sadar Sub Dv
- iv) AE, Ghatal Sub Dv
- v) AE, Jhargram Sub Dv
- vi) AE, RWS Sub Dv

2. EE, Tamluk Divn

- i) AE, HQ
- ii) AE, Tamluk Sadar Sub Dv
- iii) AE, Haldia Sub Dv
- iv) AE, Contai Sub Dv
- v) AE, Digha Sub Dv
- vi) AE, RWS Sub Dv

3. EE, Bankura Divn

- i) AE, HQ
- ii) AE, Sadar Sub Dv
- iii) AE, Khatra Sub Dv
- iv) AE, Bishnupur Sub Dv
- v) AE, RWS Sub Dv

4. EE, Haldia W/S Divn

- i) AE, HQ
- ii) AE, Haldia Sub Dv
- iii) AE, Haldia Stores Sub Dv

1. EE, Howrah Divn

- i) AE, HQ
- ii) AE, Sadar Sub Dv
- iii) AE, Uluberia Sub Dv
- iv) AE, RWS Sub Dv

2 EE, Hooghly Divn

- i) AE, HQ
- ii) AE, Chinsurah Sub Dv
- iii) AE, Chandannagar
- iv) AE, Sreerampur
- v) AE, Arambagh
- vi) AE, RWS Sub Dv

3 EE, Burdwan Divn

- i) AE, HQ
- ii) AE, Sadar Sub Dv
- iii) AE, Kalna Sub Dv
- iv) AE, Katwa Sub Dv
- v) AE, Durgapur Sub Dv
- vi) AE, RWS Sub Dv

4 EE, Birbhum Divn

- i) AE, HQ
- ii) AE, Sadar Sub Dv
- iii) AE, Nalhati Sub Dv
- iv) AE, Rampurhat Sub Dv
- v) AE, Bolpur Sub Dv
- vi) AE, RWS Sub Dv

1 EE, RCFA Divn-I

- i) AE-I
- ii) AE-II

2 EE, Durgapur W/S Divn

- i) AE-I
- ii) AE-II

3 EE, Purulia Divn

- i) AE, HQ
- ii) AE, Sadar Sub Dv
- iii) AE, Raghunathpur Sub Dv
- iii) AE, RWS Sub Dv

PERMANENT SET UP OF PHE DTE.

CHIEF ENGINEER (PLANNING & WQM)

Assistant Chief Engineer-I & III ← → OSD (Monitoring Cell)

SE, Planning Circle-I
DSE, Planning Circle-I
EE, Planning Circle-I

SE, Planning Circle-II
DSE, Planning Circle-II
i) AE-I
ii) AE-II

SE, NTK W/S Circle
EE, Proj Mgt. NTK W/S Circle

- | |
|---|
| 1 EE, PI & Design Divn-I
i) AE-I
ii) AE-II |
| 2 EE, PI & Design Divn-II
i) AE-I
ii) AE-II |
| 3 EE, PI & Design Divn-III
i) AE-I
ii) AE-II
iii) AE-III |
| 4. EE, Survey Divn
i) AE, Survey Sub Dv-I (Kol)
ii) AE, Survey Sub Dv-II (Sili)
iii) AE, Survey Sub Dv-III (Mid)
iv) AE, Survey Sub Dv-IV (Bard) |
| 5 EE, S.I. Divn
i) AE-I (HQ)
ii) AE-II (HQ)
iii) AE, Kolkata S.I.Sub Dv
iv) AE, Burdwan S.I.Sub Dv
v) AE, Midnapur S.I.Sub Dv
v) AE, Jalpaiguri S.I.Sub Dv |
| 6 EE, Mech/Elect (Plg.Wing)
i) AE-I
ii) AE-II
iii) AE-II |
| 7.EE-I, Inv. Unit
EE-II, Inv. Unit
EE-III, Inv. Unit
i) AE-I
i) AE-II
ii) AE-III
iii) AE-IV |

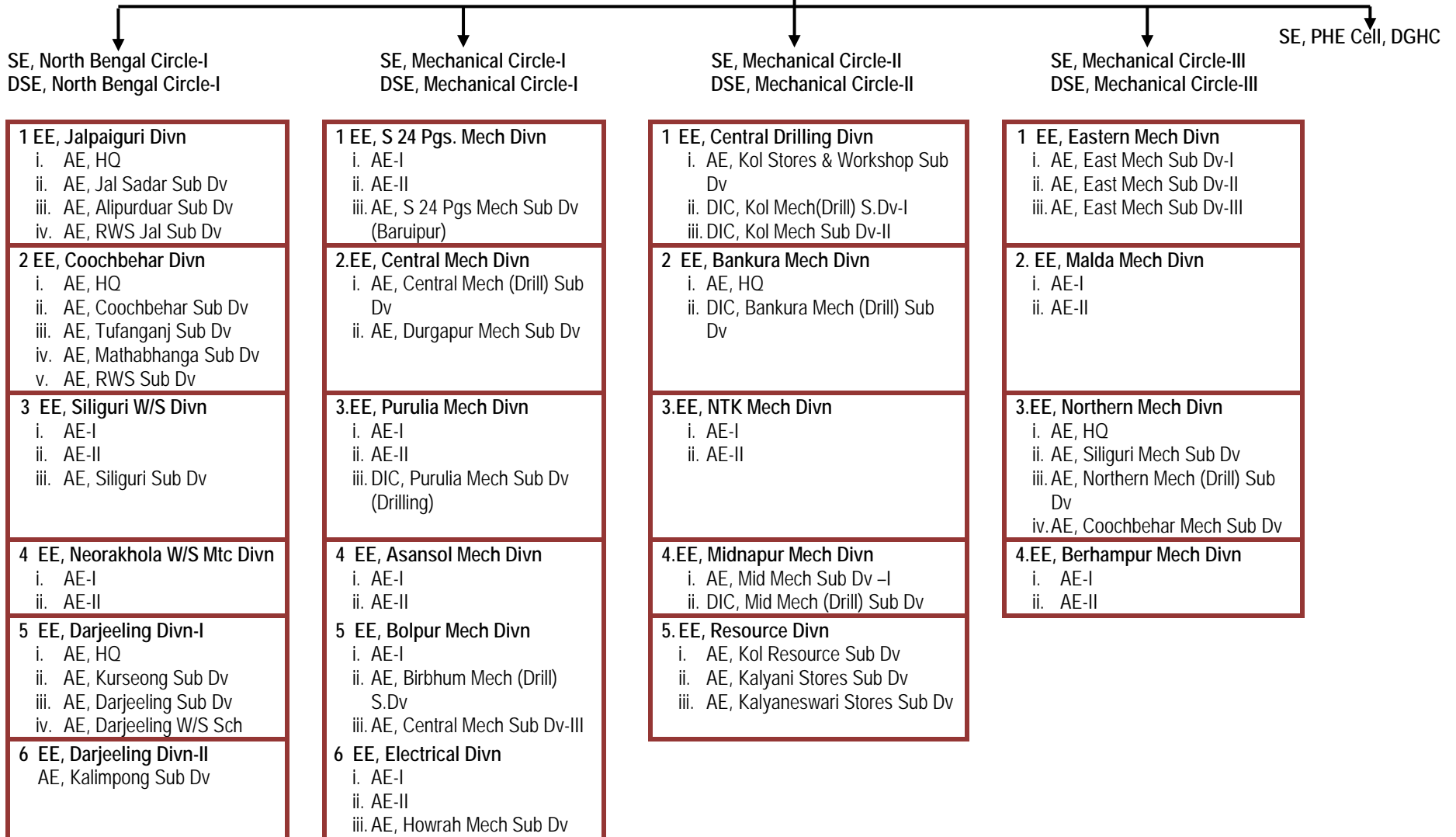
- | |
|--|
| 2 EE, PI & Design Divn-IV
i) AE-I
ii) AE-II
iii) AE, Haldia I&P Sub Dv-I
iv) AE, Haldia I&P Sub Dv-II |
|--|

- | |
|--|
| 1 EE, NTK W/S Divn-I
i) AE-I
ii) AE-II |
| 2 EE, NTK W/S Divn-II
i) AE-I
ii) AE-II |

PERMANENT SET UP OF PHE DTE.

CHIEF ENGINEER (MECHANICAL/ELECTRICAL)

Assistant Chief Engineer (Mech/Elect) ←



SE-Superintending Engineer , EE – Executive Engineer, AE – Assistant Engineer, DSE-Deputy Superintending Engineer